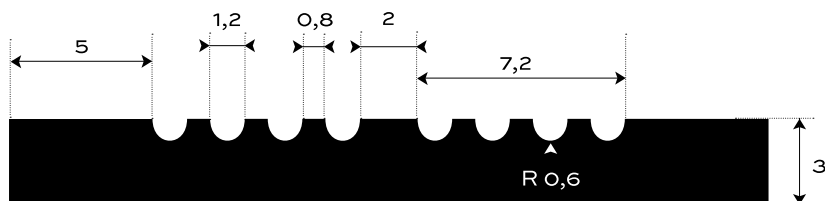


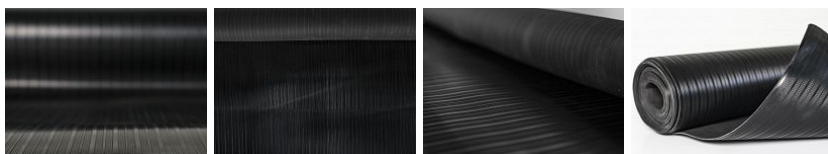
# RUBBER FLOORING FINE RIBBED — S2-EPDM96



<b>EXTERIOR</b>	80 +/- 5 <b>Sh A</b>	3 <b>mm</b>	3.4 <b>kg/m<sup>2</sup></b>
<b>ENVIRONMENT</b>	<b>HARDNESS</b>	<b>THICKNESS</b>	<b>BASIS WEIGHT</b>



Bottom side - cloth impression



## ADDITIONAL INFORMATION

Temperature range -40/+100 °C.

## RESISTANCE

Weather resistance	HIGHLY RESISTANT
Ozone resistance	HIGHLY RESISTANT
UV resistance	HIGHLY RESISTANT
Alkaline resistance	HIGHLY RESISTANT
Acid resistance	HIGHLY RESISTANT
Oil resistance	NO
Gasoline resistance	NO

Rubber roofing for interior and exterior surfaces. Durable and low maintenance with easy handling. In a finely grooved pattern of the S2 type, heat-resistant in black color. In standard thickness 3 mm. It weighs 3.4 kg / m<sup>2</sup>. Specify in the configurator.

## CONFIGURATION OPTIONS

### THICKNESS

3 mm (+/- 0,3 mm)

### WIDTH

1200 mm (+/- 10 mm)

1000 mm (+/- 10 mm)

### LENGTH

10 m (+/- 200 mm)