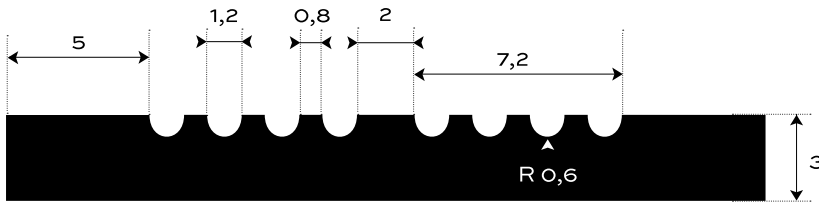


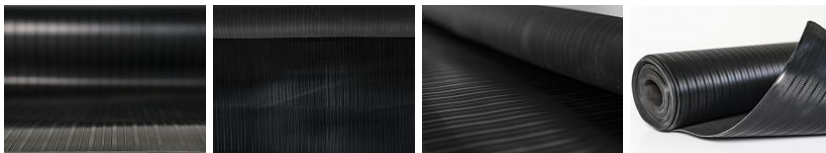
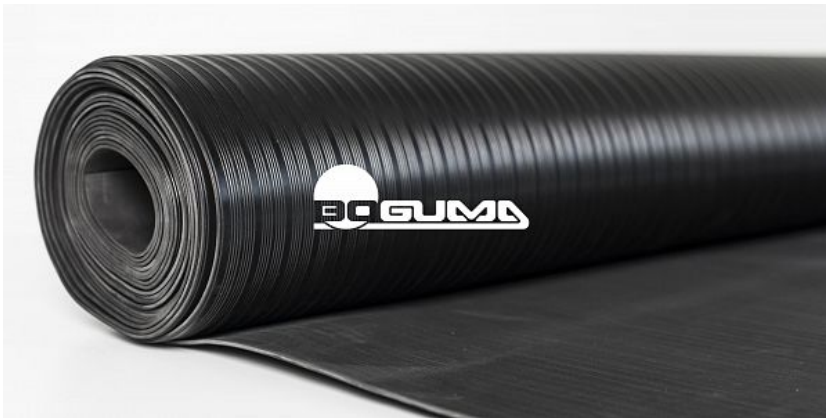
RUBBER FLOORING FINE RIBBED — S2-EPDM96



| | | | |
|--------------------|----------------------|------------------|-----------------------------|
| EXTERIOR | 80 +/- 5 Sh A | 3 mm | 3.5 kg/m² |
| ENVIRONMENT | HARDNESS | THICKNESS | BASIS WEIGHT |



Bottom side - cloth impression



ADDITIONAL INFORMATION

Temperature range -40/+100 °C.

RESISTANCE

| | |
|---------------------|------------------|
| Weather resistance | HIGHLY RESISTANT |
| Ozone resistance | HIGHLY RESISTANT |
| UV resistance | HIGHLY RESISTANT |
| Alkaline resistance | HIGHLY RESISTANT |
| Acid resistance | HIGHLY RESISTANT |
| Oil resistance | NO |
| Gasoline resistance | NO |

Rubber roofing for interior and exterior surfaces. Durable and low maintenance with easy handling. In a finely grooved pattern of the S2 type, heat-resistant in black color. In standard thickness 3 mm. It weighs 3.4 kg / m². Specify in the configurator.

CONFIGURATION OPTIONS

THICKNESS

3 mm (+/- 0,3 mm)

WIDTH

1200 mm (+/- 10 mm)

1000 mm (+/- 10 mm)

LENGTH

10 m (+/- 200 mm)